

# VALLEY CREEK CORPORATE CENTER

Exton, PA  
a development of

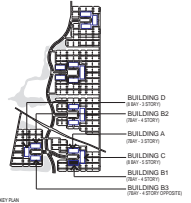


WRT Planning & Design

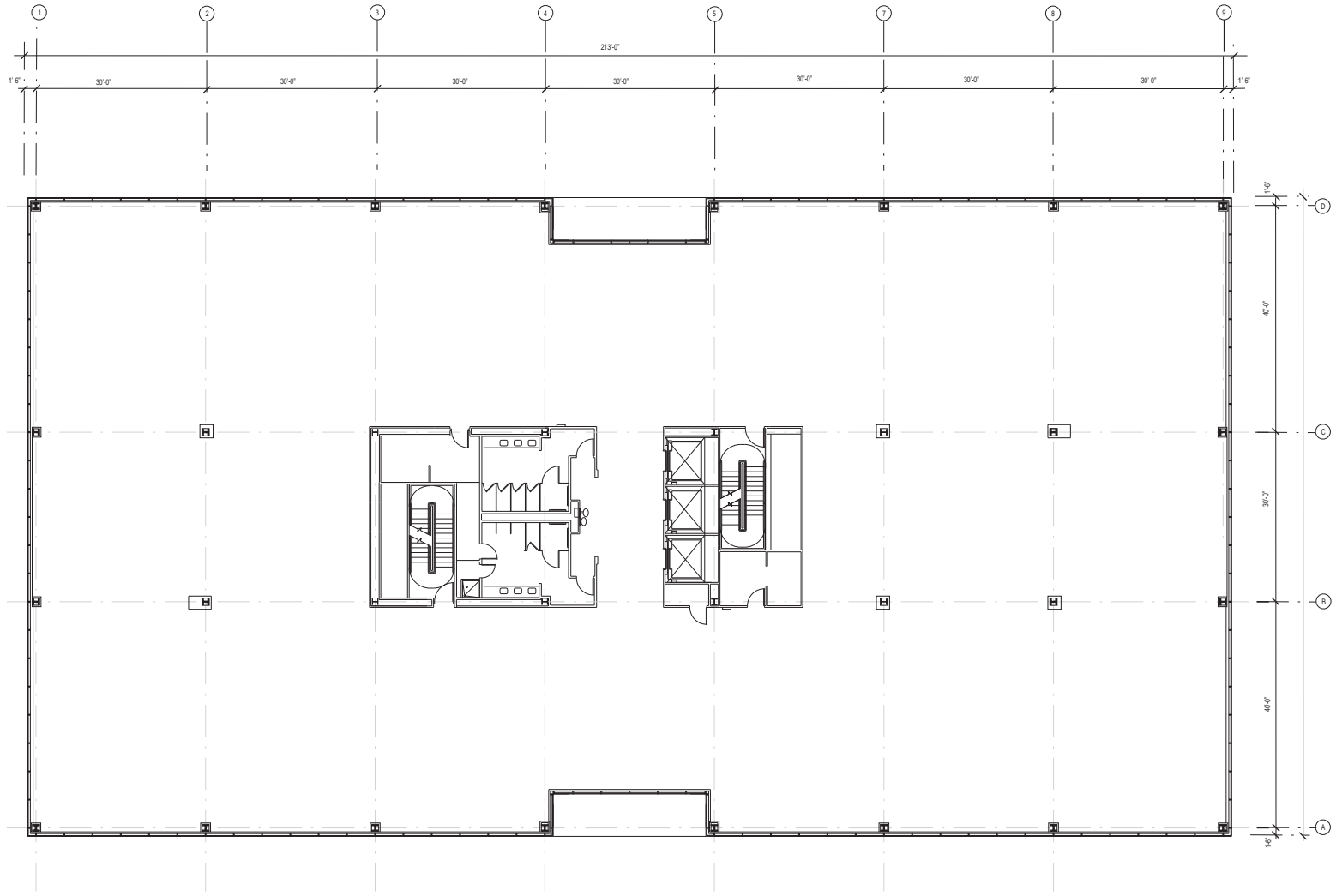
**Wallace Roberts & Todd, LLC**  
260 South Broad Street Philadelphia, PA 19102  
215.732.5215 fax 215.732.2551

**Consultants**

- Mechanical, Electrical, & Plumbing Engineering  
McHugh Engineering  
550 Pines Hill Road, Suite 205  
Fort Washington, PA 19034  
Phone: 215-641-1158 Fax: 215-641-0194
- Structural Engineering  
Cagley, Harman & Associates  
1015 West North Avenue  
King of Prussia, PA 19406  
Phone: 610-337-3360 Fax: 610-337-3359
- Specifications  
FOCUS Collaborative, Inc.  
1290 Stage Coach Road  
Palermo, NJ 08230  
Phone: 609-390-8281 Fax: 609-390-7504



## PHASE II BUILDING II BUILDING TYPE B1



**SECOND FLOOR PLAN**

Drawing Title:	SECOND FLOOR PLAN
Drawing No:	