

# VALLEY CREEK CORPORATE CENTER

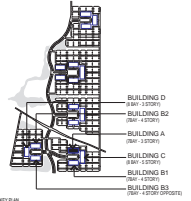
Exton, PA  
a development of



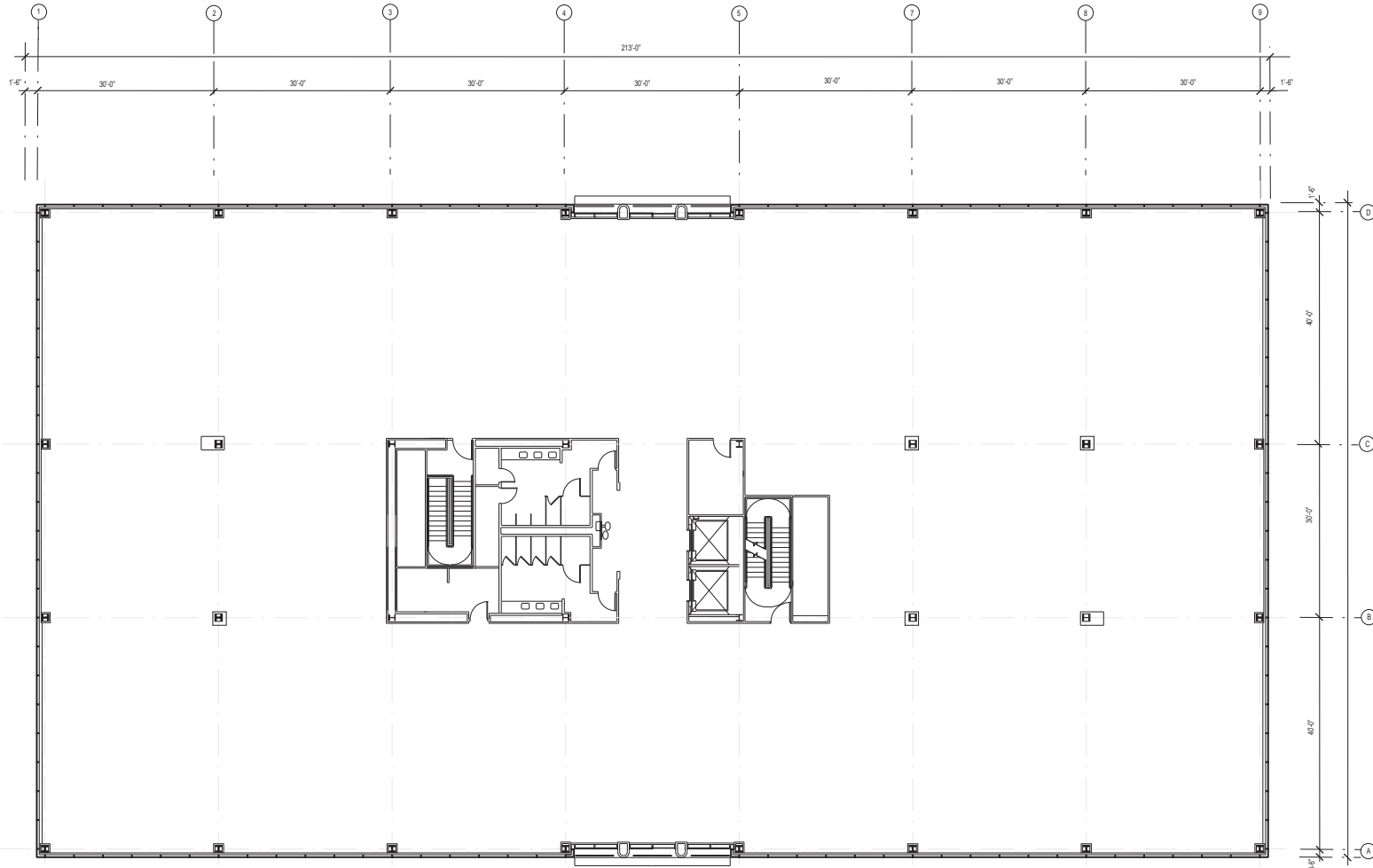
**WRT** Planning & Design

**Wallace Roberts & Todd, LLC**  
260 South Broad Street Philadelphia, PA 19102  
215.732.5215 fax 215.732.2551

**Consultants:**  
Mechanical, Electrical, & Plumbing Engineering  
McHugh Engineering  
550 Pines Hill Road, Suite 205  
Fort Washington, PA 19334  
Phone: 215-641-1158 Fax: 215-641-0194  
Structural Engineering  
Cagley, Harman & Associates  
1015 West North Avenue  
King of Prussia, PA 19406  
Phone: 610-337-3360 Fax: 610-337-3359  
Specifications  
FOCUS Collaborative, Inc.  
1290 Stage Coach Road  
Palermo, NJ 08230  
Phone: 609-390-8281 Fax: 609-390-7504



## PHASE II BUILDING I BUILDING I TYPE A



**THIRD FLOOR PLAN**

Drawing Title:	THIRD FLOOR PLAN
Drawing No:	