

# VALLEY CREEK CORPORATE CENTER

Exton, PA  
a development of

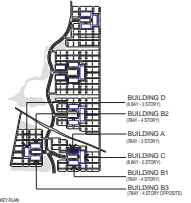


**WRT** Planning & Design

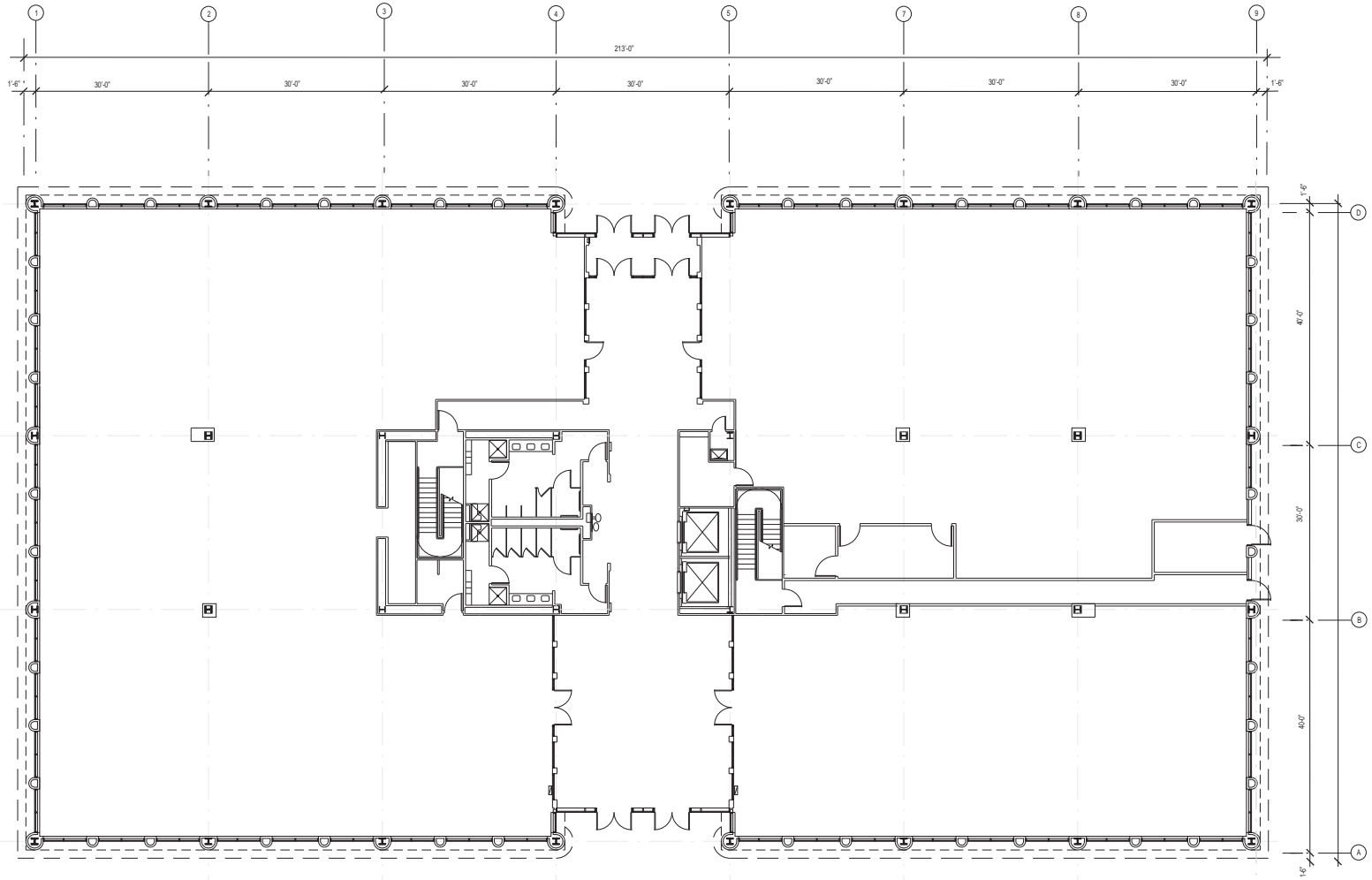
**Wallace Roberts & Todd, LLC**

260 South Broad Street Philadelphia, PA 19102 215.732.5215 fax 215.732.2551

- Consultants:
- Mechanical, Electrical, & Plumbing Engineering  
McHugh Engineering  
550 Pines Hill Road, Suite 205  
Fort Washington, PA 19034  
Phone: 215-641-1158 Fax: 215-641-0194
  - Structural Engineering  
Cagley, Harman & Associates  
1015 West North Avenue  
King of Prussia, PA 19406  
Phone: 610-337-3360 Fax: 610-337-3359
  - Specifications  
FOCUS Collaborative, Inc.  
1280 Stage Coach Road  
Palermo, NJ 08230  
Phone: 609-390-8281 Fax: 609-390-7504



## PHASE II BUILDING I BUILDING TYPE A



**FIRST FLOOR PLAN**

Drawing Title:  
**FIRST FLOOR PLAN**

Drawing No: